

# progress

**2017 EDUCATION** ISSUE*New Doe Run Elementary School*

## New Doe Run Elementary School Ready for Students

EI Associates and the Manheim Central School District held the Official Ribbon Cutting for the newly constructed Doe Run Elementary School on Monday, August 28, 2017. School administrators, teachers, students, parents, local officials, and members of the community came together to tour the new facility and kick-off the new school year with a brand new 21st Century elementary school.

The new Doe Run Elementary School provides a total of 42 classrooms housing grades K through 4, as well as support classrooms, two art classrooms, two music classrooms, and two practice rooms. Core learning and support areas include a 10,000 square foot gymnasium with bleacher seating, cafeteria, kitchen and stage, media center, green roof spaces, building administration suite, guidance and health suite areas, faculty areas, and building services area. The school is a modern, high-performance building with all aspects meeting the highest educational standards. The design of the new school allows for maximum flexibility of space for current and future use. Construction of the new Doe Run Elementary School allowed the District's three existing Elementary Schools to be consolidated into two.

The project has been designed seeking LEED® Gold Certification standards and will be highly sustainable, incorporating materials and systems that require minimal energy use.

*Portico Detail*

## Portico Improvements Restore Classic High School Entrance

EI Associates recently completed the design of a comprehensive restoration and reconstruction of the Park Ridge High School's original 1928 main entrance portico. This restoration work was based upon a detailed inspection performed by our office involving the use of a 60' manlift to reach inaccessible areas and multiple non-destructive test probes which identified water intrusion that had caused severe deterioration of the existing cornice, columns, and other cast stone elements. The work involved the restoration, reconstruction and/or replacement of cast stone components including sections of the gable pediment, the east and west entablature, columns, stylobate, pilasters, the foundation wall, concrete stairs, and the upper landing.



## El Associates Celebrates Re-Dedication of the Bensalem High School Project

*Competition-Size Pool Addition*

El Associates and the Bensalem Township School District proudly celebrated the Re-Dedication of Bensalem High School. On Saturday, September 16, 2017, school administrators, congressmen, local officials, teachers, parents, and students came together to celebrate the official ribbon-cutting and participate in a tour of the newly renovated High School.

The Bensalem Township School District first partnered with El Associates in 2006 to design a 21st Century High School. El Associates divided the impressive 530,000 square foot existing High School into four independent academies. Each of the four academies functions as “a school within a school.” There is a 9th Grade Academy, a Business and International Academy, a S.T.E.M. Academy, and a Visual and Performing Arts Academy. Each academy covers all subject areas and contains a student commons. All four academies are connected by a core social area, which includes an Internet Café and Media Center, a Fitness Center, and a flexible student dining and outdoor courtyard. El Associates replaced the existing pool with a new 22,815 square foot competition Natatorium.

Through El Associates’ grant-writing, expertise and commitment to sustainable energy-efficient design and construction, the Bensalem High School project was awarded an Alternative and Clean Energy grant in the amount of \$2 million from the Pennsylvania Department of Community and Economic Development. The building was designed to achieve LEED® Gold Certification through the utilization of sustainable building design principles.



*Roger Hulsey, AIA, CBO, RID, of El Associates Turns Over the Key to the Bensalem High School*



*Internet Café*

# Flexible Science Laboratory Addition for Metuchen

EI is assisting the Metuchen School District with the design of a science classroom addition at the High School. The proposed addition will accommodate two Science Classrooms, each measuring approximately 1,200 sq.ft., plus Laboratory Prep Rooms, Chemical Storage Areas and circulation spaces. To avoid any impact on the adjoining athletic fields the footprint of the addition has been minimized through the design of a two-story structure which will adjoin the existing two-story laboratory wing of the school. To provide the District with future flexibility, fixed laboratory casework will be located along the perimeter of the room while the center of each lab will contain movable tables to support a variety of instructional approaches including lecture style teaching and group project execution.



# District-Wide Referendum Improvement Project for Pearl River Schools

Having recently supported the Pearl River School District with its successful passage of a \$32 million referendum EI Associates is currently designing all the District-wide referendum improvements which will be executed at all five schools. The approved improvements include building renovations and additions and site improvements to the Evans Park, Lincoln Avenue and Franklin Avenue Elementary Schools, the Middle School and the High School. The construction work will be performed over a multi-year period.

The work in all the buildings include mechanical system upgrades, security improvements and interior finish upgrades, renovations and expansions to Middle School Music, Gymnasium, Cafeteria and Outdoor Play areas, and circulation and Science Wing improvements, Locker Room and Music/Math/Art area expansions, Library renovations and addition and Guidance Office area modifications at the High School. The work also covers the installation of a new High School synthetic turf field and rehabilitation of the existing track and tennis courts.





*Greater Naticoke Area School District Board Members Break Ground on Kennedy Early Childhood Center Project*



*Peter Ortiz, Vice President for El Associates, hands Superintendent, Ron Grevera the symbolic groundbreaking shovel.*

## The Greater Naticoke Area School District Breaks Ground on Kennedy Early Childhood Center

On April 27, El Associates and the Greater Naticoke Area School District celebrated the official groundbreaking for the proposed Kennedy Early Childhood Center. School administrators, teachers, students, parents, and members of the community came together to support the construction of an upgraded facility that will accommodate future enrollment growth as well as future educational program needs.

El Associates completed a district-wide feasibility study for the Greater Naticoke Area School District, which included an evaluation of all existing facilities, current educational programming, and future enrollment projections to determine future accommodations. The work scope will include constructing additions onto the existing Kennedy Elementary School and will consist of full renovations with the consolidation of two other existing elementary schools into one high performance building that will house the District's Pre-K – K-2 elementary students.

Special features for the Kennedy Early Childhood Center will include a number of flexible spaces, both small and large group instruction areas, multi-purpose and physical education spaces, community-use spaces, student dining and food service upgrades, a health suite, and support areas for student and administration use.

The Kennedy Early Childhood Center has been designed to attain USGBC LEED® Silver Certification and will be used as an educational tool for the District demonstrating the benefits of building sustainability.

## Strategic Addition Converts Hillside School

El Associates completed a District-Wide Feasibility study to identify potential expansion and redistricting options to accommodate the changing demographics for Hillside Public Schools. The study resulted in El's recent completion of the design of additions which permitted the conversion of the George Washington Elementary School into a middle school. As a new Grade 7 and 8 middle school the George Washington School required the addition of a new Gymnasium and two new classrooms to accommodate the planned student enrollment. The building addition is located at the western wing of the existing building.

The new Gymnasium measures approximately 8,000 sq.ft. and the two classrooms each measure approximately 800 sq.ft. The addition also incorporates new boys and girls locker and toilet facilities to serve the Gymnasium. The total building addition footprint, including circulation, is approximately 13,400 sq.ft.



*New Gymnasium*



## Auditorium Renovations for Kittatinny High School

EI Associates recently assisted the Kittatinny Regional School District by designing renovations to the Auditorium at the Kittatinny Regional High School located at 77 Halsey Road, Newton, NJ. The auditorium, constructed in 1975, was in need of significant finish improvements and support system replacements. The project covered:

- Replacement of the existing wood slat acoustical panels located at the rear of the auditorium and front of the stage with new fabric wrapped acoustical panels for a more contemporary look.
- Enlargement of the existing sound control booth opening between the booth and auditorium and installation of larger shutters at the enlarged opening.
- Replacement of ductwork grills at both sides of stage.
- Installation of new ceiling mounted speakers within the auditorium seating area.
- Installation of new stage lighting and installation of new house area LED lighting.
- Retrofitting the existing 2' x 4' suspended acoustical tile ceiling with new 2' x 2' ceiling system.
- Replacement of the existing stage rigging.



*Front Façade of Weatherly Area Elementary School*

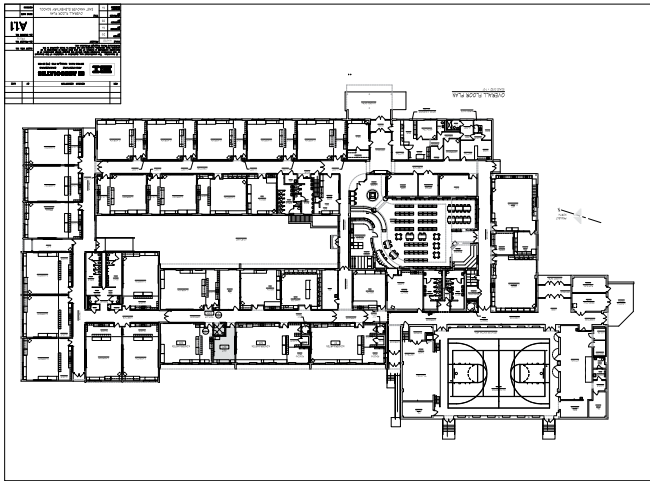
## Weatherly Area School District Hires EI Associates to Perform District-Wide Feasibility Study

The Weatherly Area School District recently contacted EI Associates for help in assessing the current condition of their school facilities. The District retained EI Associates to conduct a district-wide feasibility study to evaluate all of their school facilities. The study will analyze the District's current student enrollment versus projections, the buildings' conditions and capacity, energy use and efficiency of each facility along with current educational planning and future educational trends. The ultimate goal of the study will be to provide the District with future options based on the findings. The Weatherly Area School District currently operates a K-5 Elementary School, a 6-8 Middle School, and a 9-12 Senior High School.

# Lower Dauphin School District Turns to EI Associates to Design Alterations and Upgrades

EI Associates has been retained once again by the Lower Dauphin School District to assist the District with alterations and upgrades for their South Hanover and East Hanover Elementary Schools in Dauphin County, PA.

EI Associates has been working with the Lower Dauphin School District for twenty-five years having completed many capital projects for the District. The District approached EI Associates to discuss their need for alterations of existing spaces including four new single-use toilets, a subdivided computer room/small group instruction room, an enlarged guidance office, and an improved nurse's suite and cot area. The upgrades will enlarge single-use toilet rooms including their associated code deficiencies, as well as repair work regarding degraded expansion joint covers in the floor. Along with providing basic architectural design services EI Associates will be providing mechanical, electrical and plumbing (MEP) Engineering Services, which will support the new toilets as well as HVAC and electrical work on the new spaces and existing faculty room areas. Alterations and upgrades began in June 2017.



*Alterations and Upgrades Needed for South Hanover and East Hanover Elementary Schools*

# News, Notes & Events

## SUSTAINABLE DESIGN

### LEED® Certified

South Eastern SD – Delta-Peach Bottom ES – Silver

South Eastern SD – Fawn Area ES – Silver

### Seeking LEED® Certification

Bensalem Township SD – Bensalem HS – Gold

Greater Nanticoke Area SD – Kennedy Early Childhood Center – Silver

Halifax Area SD – Halifax Area MS/HS – Gold

Hatboro-Horsham SD – Hallowell ES – Gold

Lehigh Area SD – Lehigh Area Elementary Center – Gold

Lehigh Area School District – Middle School – Gold

Lehigh Area School District – High School – Gold

Manheim Central School District – Gramby Street Elementary School – Gold

Manheim Central School District – Doe Run Elementary School – Gold

South Eastern SD – Stewartstown ES – Silver

## NEW PROJECTS

Academy of Urban Leadership  
Andover Regional SD  
Bergen Catholic High School  
Brandywine Heights Area SD  
Camp Hill SD  
Chester SD  
Denville BOE

Code Analysis & Building Renovations  
Gas Line Conversion  
Campus Revitalization  
Secure Entrance Study  
District-Wide Feasibility Study  
Media Center Renovations  
Library & Computer Lab Renovations, Classroom Subdivisions,  
Life Skills Area Renovations, Transportation Building Parking  
Improvements & Gymnasium HVAC Upgrades  
Schematic Design & Land Development  
TCU Site Plan Approval Services  
Alterations/Renovations  
Middle School  
High School Science Classroom Addition  
District-Wide Feasibility Study  
Long-Range Facilities Plan  
Referendum Expansion at Miriam Avenue ES  
PS #5 Facility Improvements  
District-Wide Referendum Improvements  
HS Athletic Complex, Repaving, Feasibility Study  
Electrical Upgrade at Seth Boyden ES  
District-Wide Master Plan & Feasibility Study  
Window Replacement at Tuscan ES  
Roof Replacements, Masonry Repairs & Deficiency Prioritization  
Planning  
District-Wide Space Utilization Study, HS Boiler Replacement,  
HS Security Camera Upgrades, Transportation Building Parking  
Expansion & HS Media Center HVAC Upgrades  
District-Wide Feasibility Study

Hamilton Park Montessori School  
Lakewood SD  
Lower Dauphin SD  
Manheim Central SD  
Metuchen BOE

Montague BOE  
Newton BOE  
Paterson SD  
Pearl River SD  
Piscataway SD  
South Orange-Maplewood SD

Summit SD

Union BOE

Weatherly Area SD

## EVENTS

- PASA-PSBA Exhibition "School Leadership Conference" – October 18-20 – Hershey Lodge, Hershey, PA / Booth #633-635
- NJSBA/NJASBO/NJASA 2017 Workshop and Exhibition, "Education for a Common Purpose" – October 23-26 – Atlantic City Convention Center, Atlantic City, NJ / Booth #517.
- PASBO Annual Conference – March 6-9, 2018 – Hershey, PA / Booth #101



For additional information  
on our services visit our website  
[www.eiassociates.com](http://www.eiassociates.com)  
or contact:

8 Ridgedale Ave, Cedar Knolls, NJ 07927

☎ 973.775.7777

✉ [joseph\\_donnelly@eiassociates.com](mailto:joseph_donnelly@eiassociates.com)

2001 North Front Street, Bldg 3, Harrisburg, PA 17102

☎ 717.233.4556

✉ [dwertz@eiassoc.com](mailto:dwertz@eiassoc.com)